

# NORSPRAY<sup>®</sup>



NOR450

**AIR OPERATED**

**HIGH PRESSURE  
PAINT SPRAY  
EQUIPMENT**

**CE**

# NORSPRAY® 450

CE



**Super**  
450

**NORSPRAY® 450** is a complete air operated high pressure paint spray unit atomizing products without air.

**NORSPRAY® 450** is a heavy duty high capacity coating unit handling epoxies and other heavy viscous products used in shipyards and by contractors on large jobs.

**NORSPRAY® 450** has sufficient power and capacity to supply 3 spray guns simultaneously with up to 150 meters of paint spray hose.

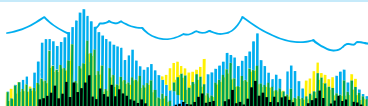
### Main advantages:

- Atomizing without air / eliminates overspray.
- Delivery maximum 12.5 ltrs min.
- Operating 3 spray guns.
- Maximum tip size 1 spray tip 0.061"  
2 spray tips 0.043"  
3 spray tips 0.037"
- 4 cycles per liter.
- Approx. air consumption:  
4 ltrs min. - 80 psi/5.4 bar: 50 cfm/1.5 m<sup>3</sup> min.  
6 ltrs min. - 80 psi/5.4 bar: 75 cfm/2.3 m<sup>3</sup> min.  
12 ltrs min. - 80 psi/5.4 bar: 140 cfm/4.3 m<sup>3</sup> min.
- Heavy duty cart.
- Stainless steel wetted pump parts.
- Divorced construction of air motor and pump.
- Double ball pump action ensures continuous flow.
- Atomizing heavy viscous products.
- Large selection of accessories.
- After Sales Service assured by your dealer.

REFERENCE	DESCRIPTION
<b>NOR450</b>	<b>NORSPRAY® 450</b> complete on cart incl. 45:1 air operated pump with 20 liters suction hose, suction filter, air regulator/filter/oiler unit, outlet manifold with 60 M filter and 1/4" dump valve
NW2200	Spray gun 500 bar 1/4 NPT
NG5300	NORSPRAY® 45:1 pump only
NG3045	Wall mounting bracket
NW5067	Suction system for 20 liter container
NG1010	Filter 30 mesh
NG1011	Filter 60 mesh
NG1012	Filter 100 mesh
NG1013	Filter 200 mesh
NG1100	High pressure filter complete
NG6046	NORFLEX® 1/4" H.P. spray hose WP 340 bar - 15 m - 1/4" NPSM-F
NG6015	NORFLEX® 3/8" H.P. spray hose WP 240 bar - 15 m - 3/8" NPSM-F
NG6074	NORFLEX® 3/8" H.P. spray hose WP 400 bar - 15 m - 3/8" NPSM-F
NM8010S	Nipple 1/4" NPT MxM
NM8011	Nipple 1/4"x3/8"NPT MxM
NM8012	Nipple 3/8" NPT MxM
NG5032	Ball valve 3/8" NPSM FxF
NW3077	Repair kit spray gun NW2200
NG2014	Repair kit air motor NOR450
NG2045	Repair kit displacement pump NOR450

Fluid pressure ratio . . . .	45:1
Cycles per liter . . . . .	4 cycles
Delivery maximum . . . . .	12.5 ltrs/min.
Operating air pressure	
min. . . . .	45 psi / 3 bar
max . . . . .	95 psi / 6.5 bar
Maximum fluid pressure	
continued service . . . . .	4300 psi / 290 bar
Air inlet pump . . . . .	3/4" NPSM-F
Weight . . . . .	85 kg

YOUR DEALER:



**NOREXCO®**

**NOREXCO S.A.**

16, rue des Chasseurs - Z.I. Internationale  
74100 Ville-la-Grand - France  
Tél. (04) 50 38 37 36 - Fax (04) 50 92 88 44