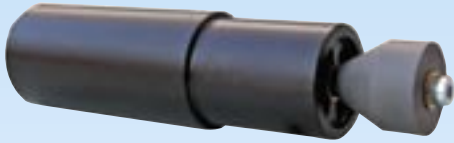




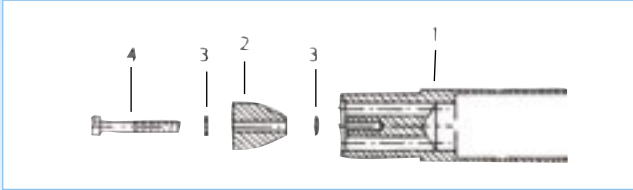
NORBLAST® INTERNAL PIPE CLEANERS NOB1/NOB2

NORBLAST® 1 - INTERNAL PIPE CLEANER 33 mm - 75 mm / 1 1/4" - 3"



The **NORBLAST® 1** is used for direct mounting on 1/2" hose. For use in pipes with inside diameters from 33 mm to 75 mm / 1 1/4" to 3".

Move the internal pipe cleaner by pulling the hose. A deflection tip divides the abrasive into a circular pattern hitting the surface at an angle of 45°. Ideal for very light duty occasional jobs.

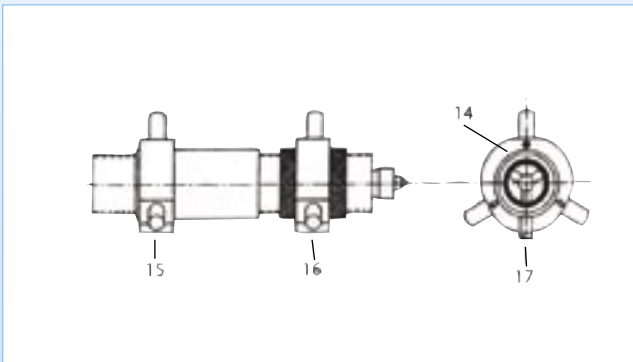
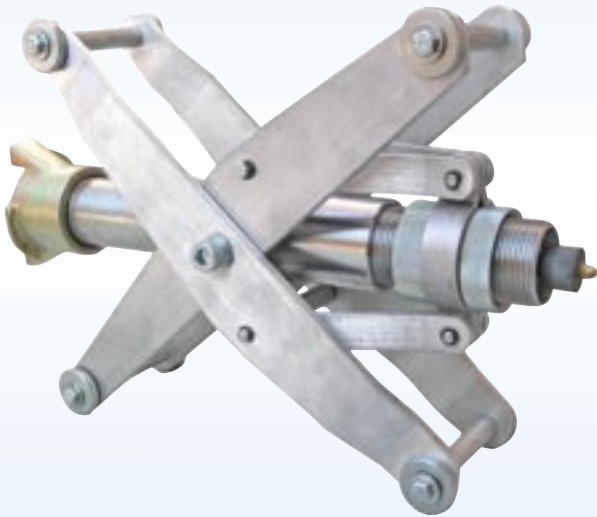


REP.	REF.	DESCRIPTION
-	NOB1	Internal pipe cleaner complete
1	NOB1434	Housing
2	NOB1442	Deflecting tungsten carbide tip
3	NOB1436	Washer
4	NOB1437	Bolt

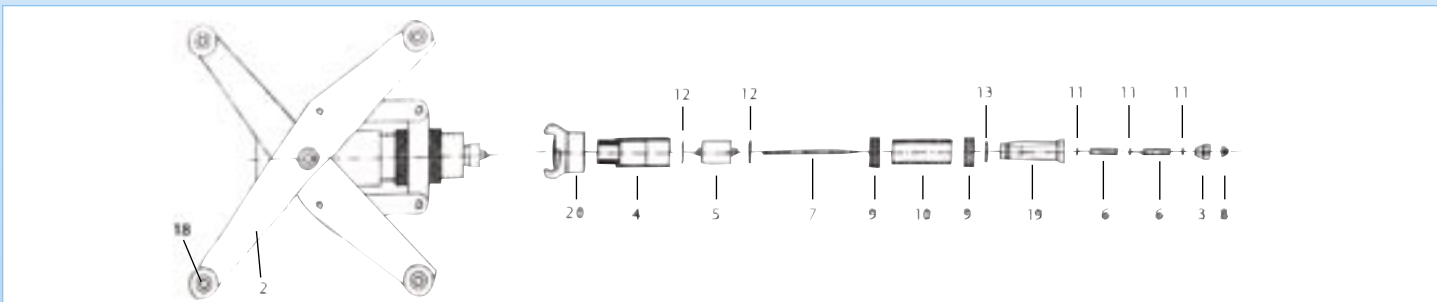
NORBLAST® 2 - INTERNAL PIPE CLEANER 75 mm - 300 mm / 3" - 12"

The **NORBLAST® 2** is used for internal pipe blasting on pipes varying from 75 mm to 300 mm / 3" to 12".

Move the internal pipe cleaner by pulling the hose. A deflection tip divides the abrasive into a circular pattern hitting the surface at an angle of 45°. Use 1 1/4" I.D. blast hose.



REP.	REF.	DESCRIPTION
-	NOB2	Internal pipe cleaner complete
1	NOB1440	Complete centering collar device
2	NOB1441	Centering carriage
3	NOB1442	Deflection tip tungsten carbide
4	NOB1443	Body
5	NOB1444	Support
6	NOB1445	Sleeve
7	NOB1446	Rod
8	NOB1447	Nut
9	NOB1448	Lock nut
10	NOB1449	Sleeve
11	NOB1450	Washer
12	NOB1451	Gasket
13	NOB1452	O-Ring
14	NOB1453	Bolt
15	NOB1454	Front collar
16	NOB1455	Rear collar
17	NOB1456	Bolt
18	NOB1457	Wheel
19	NOB1458	Nozzle 13 mm
19	NOB1459	Nozzle 16 mm
20	OX1010	Coupling

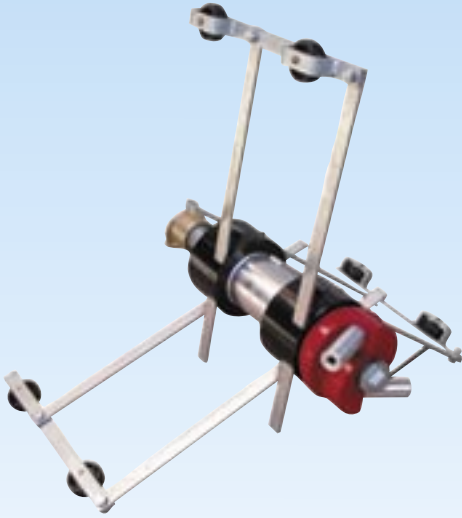


INTERNAL PIPE CLEANER NOB 3

NORBLAST®



NORBLAST® 3 - INTERNAL PIPE CLEANER 200 mm - 900 mm / 8" - 36"



The **NORBLAST® 3** is used for internal pipe blasting on pipes varying from 200 mm to 900 mm / 8" to 36".

Two specially designed nozzles propel the unit's rotating head while blasting abrasive at high velocity into the pipe. Since cleaning requirements vary, a range of different nozzles is available.

Use 1 ¼" abrasive blast hose.

Nozzles to be ordered separately.

REP.	REF.	DESCRIPTION	REP.	REF.	DESCRIPTION
-	NOB3	Internal pipe cleaner complete without nozzle	17	NOB1482	Bolt
1	NOB1465	Nozzle head	18	NOB1483	Bolt
2	NOB1466	Plug	19	NOB1484	Bolt
3	NOB1467	Housing	20	NOB1485	Carriage collar
4	NOB1468	Pin	21	NOB1486	Bolt
5	NOB1469	Brake	22	OX1010	Coupling
6	NOB1470	Tube	23	OX1021	Gasket
7	NOB1471	Ring	24	NOB1487	Leg 580 - 890 mm
8	NOB1472	Bearing	25	NOB1488	Leg 380 - 580 mm
9	NOB1473	Seal	26	NOB1489	Leg 260 - 380 mm
10	NOB1474	Seal leather	27	NOB1490	Leg 210 - 260 mm
10	NOB1475	Seal Teflon	28	NOB1491	Arm with wheels
11	NOB1476	Coupling	29	NY60	Nozzle 1/4" - 6 mm length 45 mm
12	NOB1477	Washer TC	30	NY80	Nozzle 5/16" - 8 mm length 45 mm
13	NOB1478	Nipple - rubber lined	31	NY80/80	Nozzle 5/16" - 8 mm length 80 mm
14	NOB1479	Lock ring	32	NY95/100	Nozzle 3/8" - 9,5 mm length 100 mm
15	NOB1480	Housing	33	NY95	Nozzle 3/8" - 9,5 mm length 45 mm
16	NOB1481	Bolt	34	NOB1492	Wheel
			35	NOB1493	Centering carriage complete

